

SM *New Abutment*

SM Conical / Multiunit / Locator / Octa Abutment



SN

Contents

System Flowchart for SM Conical Abutment. 1

System Flowchart for SM Octa Abutment. 2

SM Conical Abutment System. 3

SM Multiunit Abutment System. 3

*SM Locator Abutment. 5

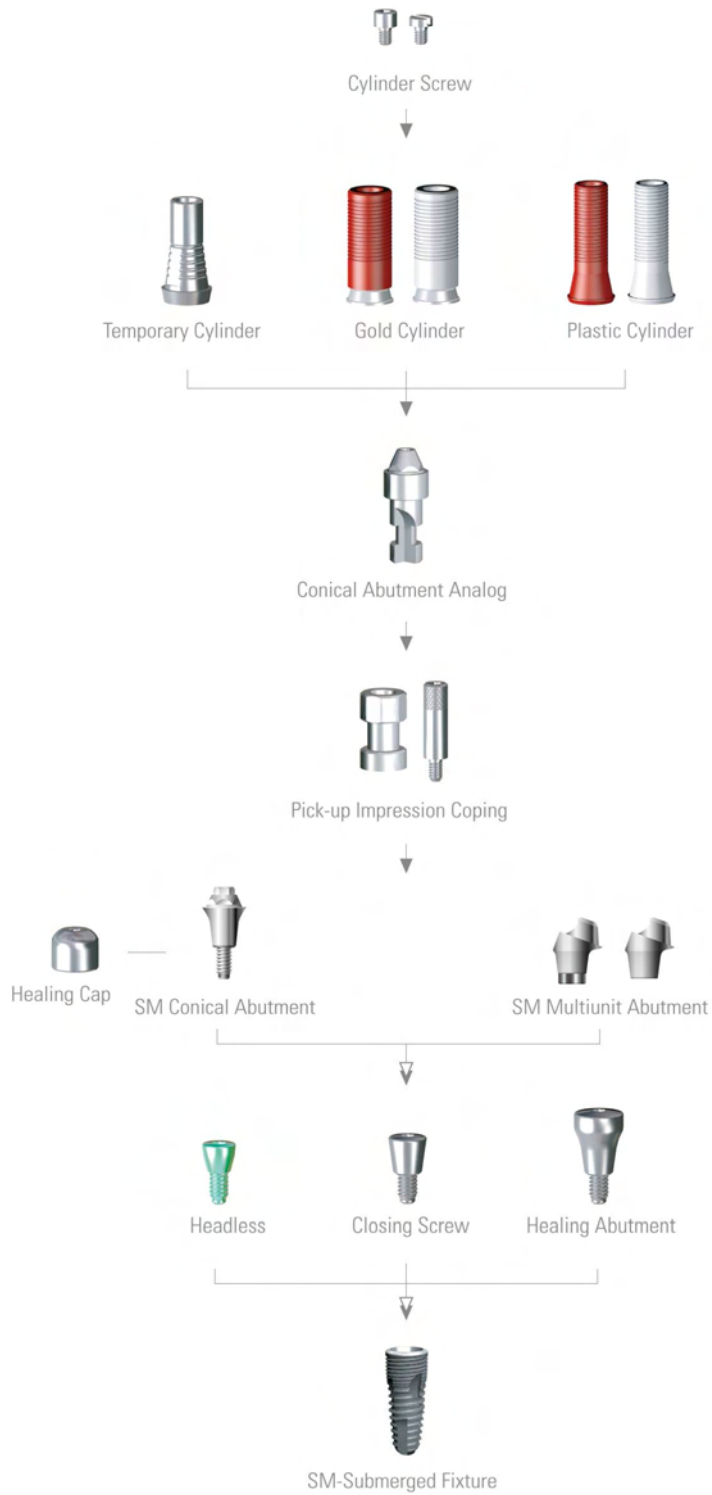
SM Octa Abutment System. 6



SM *New Abutment*

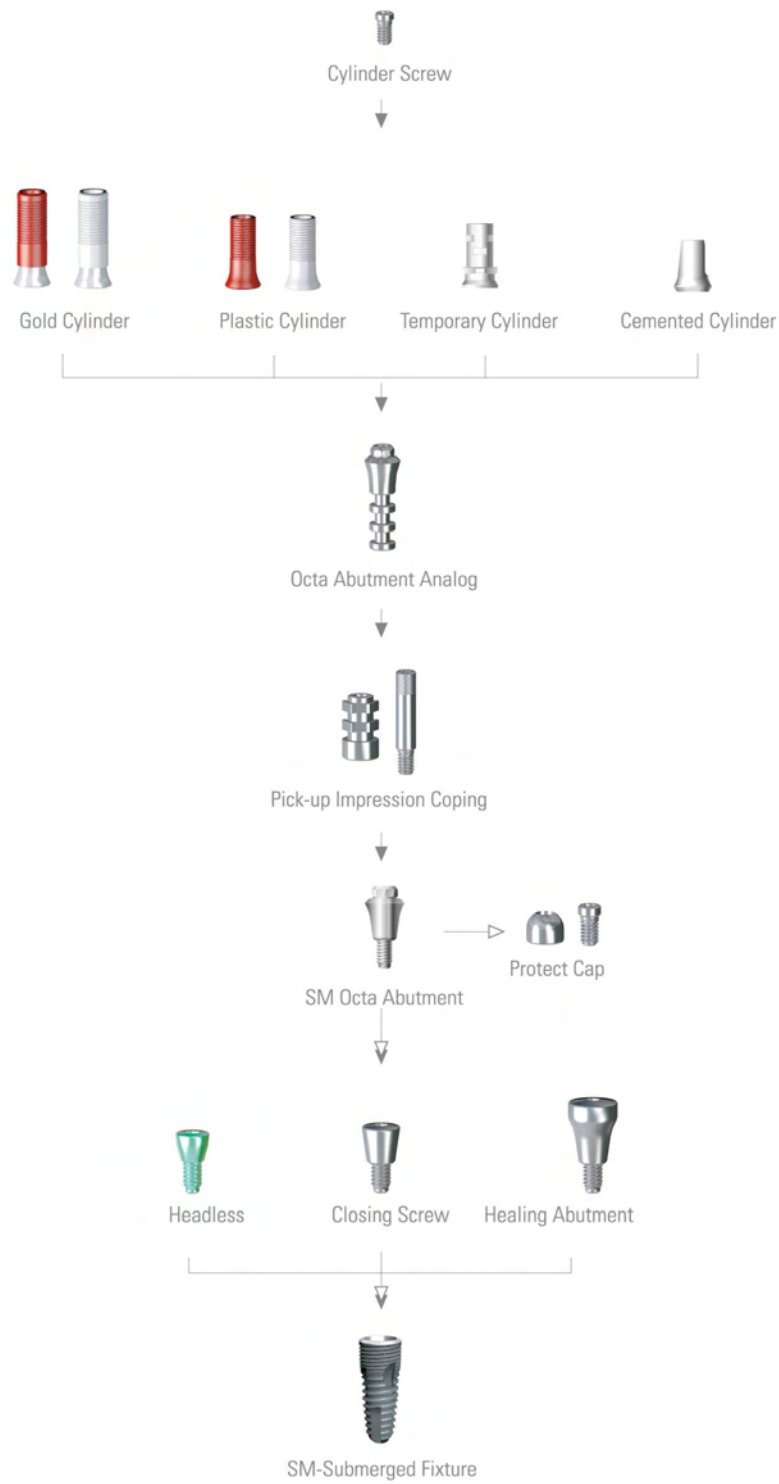
SM New Abutment

System Flowchart for **SM Conical** Abutment & **SM Multiunit** Abutment



SM New Abutment

System Flowchart for SM Octa Abutment



SM New Abutment

SM Conical / SM Multiunit Abutment System

SM-Submerged Fixture



D1/D2	Ø3.8/Ø3.3	Ø4.1/Ø3.6	Ø4.5/Ø4.0	Ø5.0/Ø4.5	Ø5.3/Ø4.8
Length Apex	Ø2.4	Ø2.6	Ø3.0	Ø3.5	Ø3.6
8	SFN 3808	SFN 4108	SFR 4508	SFR 5008	SFW 5308
10	SFN 3810	SFN 4110	SFR 4510	SFR 5010	SFW 5310
12	SFN 3812	SFN 4112	SFR 4512	SFR 5012	SFW 5312
14	SFN 3814	SFN 4114	SFR 4514	SFR 5014	SFW 5314

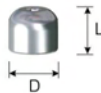
SM Conical Abutment



Cuff	Diameter	Ø4.8	Ø5.5
1		SCS 4801	SCS 5501
2		SCS 4802	SCS 5502
3		SCS 4803	SCS 5503

- Maintains screw and prosthetic aesthetics
- For fabrication of prosthetic on cylinder after abutment has been placed
- Up to 48° path angle
- Uses 2,0 Internal Conical Abutment Driver
- Package Contents: Abutment + Abutment Screw
- Tightening Torque: 35 Ncm

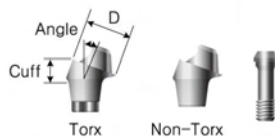
Healing Cap



Length	Diameter	Ø5.0	Ø5.8
4.5		HCN 40504	-
4.6		-	HCN 50604

- Protects the Conical Abutment and promotes patient healing
- Uses 1,2 Hex Driver
- Package Contents: Healing Cap
- Tightening Torque: 20 Ncm

SM Multiunit Abutment



*Multiunit Abutment Holder: MAH 1425

Diameter	Ø3.9			
Angle	20°		30°	
Cuff Type	Torx	Non-Torx	Torx	Non-Torx
2.5	SUA 392520	SUA 392520N	-	-
3	SUA 393020	SUA 393020N	SUA 393030	SUA 393030N
4	SUA 394020	SUA 394020N	SUA 394030	SUA 394030N
5	SUA 395020	SUA 395020N	SUA 395030	SUA 395030N
Screw	MAS 1806S			

Diameter	Ø4.8			
Angle	20°		30°	
Cuff Type	Torx	Non-Torx	Torx	Non-Torx
2.5	SUA 482520	SUA 482520N	-	-
3	SUA 483020	SUA 483020N	SUA 483030	SUA 483030N
4	SUA 484020	SUA 484020N	SUA 484030	SUA 484030N
5	SUA 485020	SUA 485020N	SUA 485030	SUA 485030N
Screw	MAS 2006S			

- Package Contents: Abutment + Screw + Holder

Multiunit Screw Driver



Diameter	Ø1.4	
Length	25	
	MSD 1425	

Gold Coping Bar / Screw



Code	GCB 4804 / GCBS 1403
------	----------------------

Transfer Impression Coping / Screw



Code	ICC 4805 / ICCS 1407
------	----------------------

Gold Cylinder



Length	Diameter		Ø5.0	Ø6.0
	12	Hex		AGN 40504
Non-Hex			AGN 40504N	AGN 50604N

- Cast in premium gold alloy after customization
- Cylinder melting point: 1400-1450° C (may vary with casting machine)
- Uses 1,2 Hex Driver
- Package Contents: Cylinder + Cylinder Screw
- Tightening Torque: 20 Ncm

Plastic Cylinder



Length	Diameter		Ø5.0	Ø6.0
	13	Hex		APN 40514S
Non-Hex			APN 40514SN	APN 50614N

- Cast in premium gold alloy after customization
- Less precise than the gold cylinder
- Uses 1,2 Hex Driver
- Package Contents: Cylinder + Cylinder Screw
- Tightening Torque: 20 Ncm

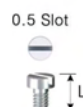
Temporary Cylinder



Length	Diameter		Ø5.4	Ø6.0
	11	Hex		TCN 40511
Non-Hex			TCN 40511N	TCN 50611N

- For fabricating temporary prosthetics on top of Conical Abutments
- Simple customization
- Minimizes restriction while in use
- Uses 1,2 Hex Driver
- Package Contents: Cylinder + Cylinder Screw
- Tightening Torque: 20 Ncm

Cylinder Screw



L	Type	M1.4	M2.0
	3.7		SSN 1403

SM New Abutment

SM Conical / SM Multiunit Abutment System & SM Locator Abutment

Pick-up Impression Coping



Length	Diameter	
	Type	
8	Hex	IPN 40508
	Non-Hex	IPN 40508N

- Create final impression of Conical Abutment on impression coping
- For use with pick-up type custom trays
- Package Contents: Impression Coping + Guide Pin

Abutment Analog



Length	Diameter	
	Type	
12		

- Provides anchor point for Conical Abutment
- Package Contents: Analog

Abutment Driver



Length	Type	
12	2.0 Int. Hex	2.7 Int. Hex

*SM Locator Abutment



Cuff	Diameter	
	Narrow	Regular/Wide
0.73 / 1.0	LOC 1351(S)	LOC 1361(S)
2.0	LOC 1352(S)	LOC 1362(S)
3.0	LOC 1353(S)	LOC 1363(S)
4.0	LOC 1354(S)	LOC 1364(S)
5.0	LOC 1355(S)	LOC 1365(S)
6.0	LOC 1356(S)	LOC 1366(S)

- Package Contents : Abutments + Male Package

SM New Abutment

SM Octa Abutment System

SM-Submerged Fixture



D1/D2	Ø3.8/Ø3.3	Ø4.1/Ø3.6	Ø4.5/Ø4.0	Ø5.0/Ø4.5	Ø5.3/Ø4.8
Length	Apex Ø2.4	Ø2.6	Ø3.0	Ø3.5	Ø3.6
8	SFN 3808	SFN 4108	SFR 4508	SFR 5008	SFW 5308
10	SFN 3810	SFN 4110	SFR 4510	SFR 5010	SFW 5310
12	SFN 3812	SFN 4112	SFR 4512	SFR 5012	SFW 5312
14	SFN 3814	SFN 4114	SFR 4514	SFR 5014	SFW 5314

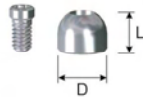
SM Octa Abutment



Cuff	Diameter	Ø4.8	Ø4.8	Ø4.8
2		SAO 3902		SAO 4802
3		SAO 3903		SAO 4803

- Used in case of crossed path or screw corrosion prevention
- Uses Octa Abutment Driver
- Package Contents: Octa Abutment
- Tightening Torque: 35 Ncm

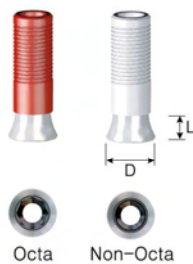
Protect Cap



Length	Diameter	Ø5.0	Ø5.0	Ø5.0
4		HCI 48504		

- Protects the Octa abutment and keeps foreign particles to a minimum
- Uses 1,7 Torx Driver
- Package Contents: Protect Cap + Cylinder Screw
- Tightening Torque: 20 Ncm

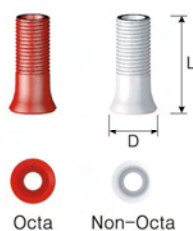
Gold Cylinder



Length	Type	Diameter	Ø5.5	Ø5.5	Ø5.5
4	Octa		AGI 48504		
	Non-Octa		AGI 48504N		

- Enables custom fabrication using the best quality dental gold alloy
- Cylinder Melting Point: 1400°C-1500°C (depending on casting machine)
- Uses 1,7 Torx Driver
- Package Contents: Gold Cylinder + Cylinder Screw
- Tightening Torque: 20 Ncm

Plastic Cylinder



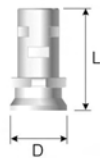
Length	Type	Diameter	Ø5.0	Ø5.0	Ø5.0
10	Octa		API 48514		
	Non-Octa		API 48514N		

- Enables custom fabrication using dental gold alloy
- Less precise than the gold cylinder
- Uses 1,7 Torx Driver
- Package Contents: Plastic Cylinder + Cylinder Screw
- Tightening Torque: 20 Ncm

SM New Abutment

SM Octa Abutment System

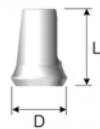
Temporary Cylinder



Length	Type	Diameter	Ø5.0	Ø5.0
10	Octa		ITC 48010	
	Non-Octa		ITC 48010N	

- Cylinder for temporary restoration
- Two type of connection, Octa / Non-Octa
- Uses 1,7 Torx Driver
- Package Contents: Temporary Cylinder + Cylinder Screw
- Tightening Torque: 20Ncm

Cemented Cylinder



Length	Type	Diameter	Ø5.0	Ø5.0
8	Octa		ICC 48508	
	Non-Octa		ICC 48508N	

- Screw / Cement-Retained Cylinder.
- Two type of connection, Octa / Non-Octa
- Uses 1,7 Torx Driver
- Package Contents: Cemented Cylinder + Cylinder Screw
- Tightening Torque: 20Ncm

Pick-up Impression Coping



Length	Type	Diameter	Ø5.5	Ø5.5	Ø5.5
10	Octa		IPI 48610		
	Non-Octa		IPI 48610N		

- Used for pick-up impressions with custom trays
- Minimizes distortion
- Uses 1,7 Torx Driver
- Package Contents: Impression Coping + Guide Pin

Abutment Analog



Length	Diameter	Ø5.0	Ø5.0	Ø5.0
14		RCI 48014		

- Provides anchor point for fabricating Octa Abutment configuration
- Package Contents: Octa Abutment Analog

Abutment Driver



Length	Type	3.0 Octa
6		HD 3006
12		HD 3012

SM

SM *New Abutment*

SM New Abutment

www.dioimplant.com

DIO IMPLANT

www.dioimplant.com

12, Centum 6 gil(1464,U-dong),
Haeundae-gu Busan, 612-020, Korea

Tel.+82-51-745-7777 Fax.+82-51-745-7778

