

2008 Company Brochure

**DIO**



---

**Striving for healthier human life is the joy of our heart.**

**Imaginative ideas into leading products.**

**Global Operation.**

.....

Since its founding in 1983, DIO has maintained a mission statement that responds both to its own change and to new developments for the world: "Striving for healthier human life is the joy of our heart", "Imaginative ideas into leading products", "Global operations." Each slogan represents significant moments in DIO's history, reflecting the endless possibilities to achieve higher standards of living everywhere.

.....

# 2008 Company Brochure

## Contents



04 CEO Message

05 Business Areas

---

■ Product Lineup

07 Dental Implant

13 Dental Equipment

17 Dental Related Service and Software

---

■ Academic Association

20 Academic & Research Association

22 DIA(DIO Implant Academy)

---

■ Corporate

24 Outline and Accomplishments

25 Research & Development

26 Business at a Glance

27 Global Business Network

---

## CEO Message



Based on talented people and technologies, DIO makes the best products and services, and is trying its utmost to be successful as a professional medical equipment company contributing to health and happiness of the human being.

Medical equipment and biotechnology industries have infinite possibilities in the future. Through technology convergence with continuously developing IT and NT, the biotechnology industry is expanding and it is the fastest growing and the most promising high-tech, high-value business.

In order to drive current market that dream technologies are being realized, based on innovations and changes to prepare for the new era, DIO promises to put in its efforts to herald a world and future that our customers dream of.

*J. C. Kim*

Chairman & CEO

## Business Areas



### DIO Implant Business

Dental Implant  
Medical Equipment & Instrument  
Dental Clinic Opening Assist  
(Loan, Interior & IT)  
DIA (DIO Implant Academy) Seminar Program

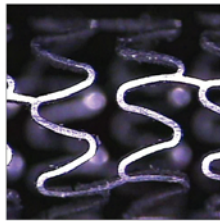
---



### Medical Business

HAp(Hydroxyapatite) / HAp-Mastic Toothpaste  
PRTC(Professional Re-Enameling Tooth Cleaning) Paste  
Nano-HAp Toothfoam

---



### Stent Business

Coronary Artery Balloon Expand Stent  
Coronary Artery Balloon Catheter  
Percutaneous Transluminal Coronary Angioplasty

---



### Construction Business

Construction of Medical Center Structures  
Interior and Exterior Decoration & Design

---



### Packaging Business

Automatic Strapping Equipment  
Fully Automatic(Transit) Machine(FA)

---

# Product Lineup

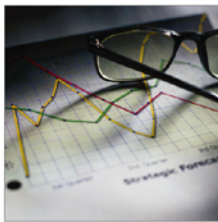
1. Dental Implant
2. Dental Equipment & Material
3. Dental Related Service and Software

## About DIO Implant



### Total Implant Solution

DIO implant provides a perfect solution in any type of clinical case, and with a wide range of implant line-up, it offers a perfect solution for both doctor's convenience and patient's conditions.



### Continuous investment

Per continuous and long-term investment plan in the Dental Implant market based on outstanding financial status (AAA credit rating), DIO Implant is investing into various R&D centers, R&D personnel, and various seminars.



### Expansion of Business structure

DIO Implant is introducing and supplying medical equipment, and providing services to meet customers' satisfaction, not only with dental implants, but by joining with the world-class dental and medical equipment companies. Moreover, DIO implant is developing the 3rd generation EPC stents and surgery instruments and, selling premium toothpaste containing FDA approved hydroxyapatite. Dio implant always keeps track of market change and is always in pursuit of future businesses.



### Cutting edge production system

Equipped with the latest machining and cleaning system, DIO implant has a systematic manufacturing system from purchasing to shipping. DIO implant is doing its best for zero-defect parts.



### Strict Quality management

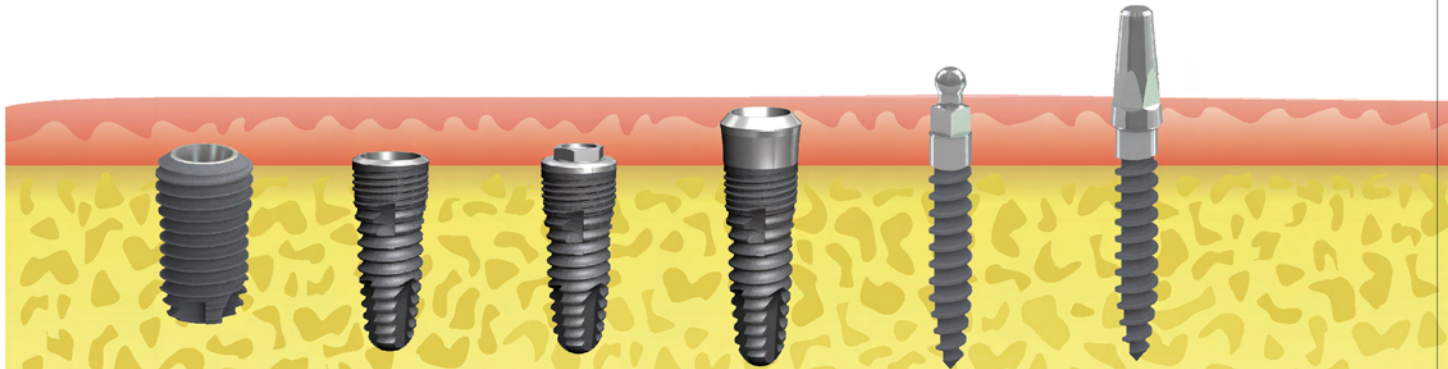
DIO Implant is a Kosdaq listed company with KFDA certification in 2003, ISO 13485 and CE in 2005, and FDA certification of USA in August of 2006. In 2006, DIO Implant completed the after-review of ISO9001, and obtained KGMP in 2007. DIO Implant keeps world-class quality.

**S – Series (Smile Series)** Smile to you and your patient – Choose your implant size: Mini to Extra-wide  
 – Choose your implant case: Internal, External, Submerged



(Smile Master)

SM-Extra Wide    SM-S    SM-E    SM-I    ProTem(Ball)    ProTem(Post)



**SM-Extra Wide**

**Torx Internal Connection**  
 Superior to Hex internal connection  
 More fixture and driver contact  
 No distortion with high torque  
**Morse Tapered**  
 Abutment is easier to insert along the internal 8° morse tapered surface.  
 Due to the wider fixture and abutment contact, free from screw loosening  
**Platform Switching**  
 "Platform Switching" technique is applied to the design of implants and abutments to reduce cretal bone loss  
**Body Design**  
 Tapered-body provides easy adjustment of insertion depth and enables excellent initial stability.  
 Reduces possibility of touching adjacent teeth root during implant insertion  
**Self Tapping**  
 Advanced thread and apex design enable easy self tapping and excellent initial stability in extraction sockets  
**Surface**  
 Biocompatible RBM  
 Bio-active Brushite (CaP) Coating  
**Size**  
 Diameter : 5.9 / 6.4 / 6.9 mm  
 Length : 6, 8, 10 mm  
**Compatibility with others**  
 Perfectly compatible with regular and wide size abutments of SM-S

**SM-S (Submerged)**

**Torx Internal Connection**  
 Superior to Hex internal connection  
 More fixture and driver contact  
 No distortion with high torque  
**Morse Tapered**  
 Abutment is easier to insert along the internal 8° morse tapered surface.  
 Due to the wider fixture and abutment contact, free from screw loosening  
**Platform Switching**  
 "Platform Switching" technique is applied to the design of implants and abutments to reduce cretal bone loss  
**Double Thread**  
 Stable initial stability and prevents cortical bone loss  
**Root Form design**  
 Root form design enables excellent initial stability.  
 Reduces possibility of touching adjacent teeth root during implant insertion  
**Self Tapping**  
 Advanced thread and apex design enable easy self tapping and excellent initial stability in extraction sockets  
**Surface**  
 Biocompatible RBM  
 Bio-active Brushite (CaP) Coating

**SM-E (External)**

**Platform Switching**  
 "Platform Switching" technique is applied to the design of implants and abutments to reduce cretal bone loss  
**Double Thread**  
 Stable initial stability and prevents cortical bone loss  
**Root Form design**  
 Root form design enables excellent initial stability.  
 Reduces possibility of touching adjacent teeth root during implant insertion  
**Self Tapping**  
 Advanced thread and apex design enable easy self tapping and excellent initial stability in extraction sockets  
**Surface**  
 Biocompatible RBM  
**Compatibility with others**  
 Perfectly compatible with abutments of FTN and FSN

**SM-I (Internal)**

**Torx Internal Connection**  
 Superior to Hex internal connection  
 More fixture and driver contact  
 No distortion with high torque  
**Morse Tapered**  
 Abutment is easier to insert along the internal 8° morse tapered surface.  
 Due to the wider fixture and abutment contact, free from screw loosening  
**Double Thread**  
 Stable initial stability and prevents cortical bone loss  
**Root Form design**  
 Root form design enables excellent initial stability.  
 Reduces possibility of touching adjacent teeth root during implant insertion  
**Self Tapping**  
 Advanced thread and apex design enable easy self tapping and excellent initial stability in extraction sockets  
**Surface**  
 Biocompatible RBM  
**Compatibility with others**  
 Perfectly compatible with abutments of 4.8 IFI, PSI

**ProTem (Ball)**

**Denture Case**  
 Applicable in edentulous case or narrow osteotomy site  
**Surface**  
 Biocompatible RBM  
 Bio-active Brushite (CaP) Coating  
**Size**  
 Diameter : 2.0 / 2.5 / 3.0 mm  
 Collar : 2 / 4 mm  
 Length : 8 / 10 / 12/ 14 / 16 mm  
**Simple Components**  
 Ease fabrication of denture by using Ball Cap and Lab Analog  
**Design**  
 Tapered-Straight-Tapered thread profile enables easy self-tapping and initial stability.  
 Flapless surgery made possible.





### ProTem (Post)

Applicable in narrow osteotomy site like maxillary centrals  
 One-body design endures high loading pressure  
**Surface**  
 Biocompatible RBM  
 Bio-active Brushite (CaP) Coating  
**Size**  
 Diameter : 2.0 / 2.5 / 3.0 mm  
 Collar : 2 / 4 mm  
 Length : 8 / 10 / 12/ 14 / 16 mm  
**Driver Connection**  
 Prevents prosthesis rotation and post part can be milled  
 and be used as customized abutment  
**Design**  
 Tapered-Straight-Tapered thread profile enables easy  
 self-tapping and initial stability. Flapless surgery made possible.

### PSI (Internal Straight)

**Torx Internal Connection**  
 Superior to Hex internal connection  
 More fixture and driver contact  
 No distortion with high torque  
 Non-submerged type  
**Morse Tapered**  
 Abutment is easier to insert along the internal 8° morse tapered surface.  
 Due to the wider fixture and abutment contact,  
 free from screw loosening internal  
**Surface**  
 Biocompatible RBM

### IFI (Internal Tapered)

**Torx Internal Connection**  
 Superior to Hex internal connection  
 More fixture and driver contact  
 No distortion with high torque  
 Non-submerged type  
**Morse Taper**  
 Abutment is easier to insert along the internal 8° morse tapered surface.  
 Due to the wider fixture and abutment contact, free from screw loosening  
**Double Thread**  
 Stable initial stability and prevents cortical bone loss  
**Body design**  
 Root form design enables excellent initial stability  
 Reduces possibility of touching adjacent teeth root during implant insertion  
**Self Tapping**  
 Advanced thread and apex design enable easy self tapping  
 and excellent initial stability in extraction sockets  
**Surface**  
 Biocompatible RBM

### FSN (External Straight)

Submerged type implant system with external hex connection  
**Body design**  
 Straight body form and triangle thread enable excellent initial stability  
**Apex design**  
 Tapered Apex enables easy initial insertion  
**Surface**  
 Biocompatible RBM  
 Various diameters and lengths available

### FTN (External Tapered)

Submerged type implant with external hex connection  
**Root Form design**  
 Root form design enables excellent initial stability.  
 Reduces possibility of touching adjacent teeth root during implant insertion  
**Self Tapping**  
 Advanced thread and apex design enable easy self tapping and excellent initial stability  
**Apex design**  
 Tapered Apex enables easy initial insertion  
**Surface**  
 Biocompatible RBM  
 Various diameters and lengths available **Body Design**

Kit – Series

Surgical Kit 4 Features

High quality surgical kits are the results of DIO implant's continuous R&D toward simplicity and convenience for users.



Internal Irrigation

DIO drill has internal irrigation which effectively reduces bone heating during drilling.



DIO Drill System with Internal irrigation



- Narrow
- Regular
- Wide

Drill Stopper

DIO Drilling system guarantees correct drilling depth by using the rotating stopper which has improved from the past when dentists had to look at depth indication. DIO Stopper can also be easily attached and detached from a drill body for easier cleaning, and this rotating system can minimize the bone loss more than non-rotating stopper.



No-mount system

DIO IMPLANT SYSTEM has adopted "NO-Mount" system. This mountless system does not require disassembling inconvenient mounts during surgical operation. DIO's HEXAGRIP increases the convenience and decreases the time of surgical operation.



Torx Coping Screw

The existing Hexa Coping screws are easily distorted even at 35Ncm, but the Torx connection by DIO Implant can endure against high wear and will not be distorted easily even in repeated tightening and loosening processes.



Master KIT

With master kit, all kinds of DIO implant system surgeries and restorations are possible.



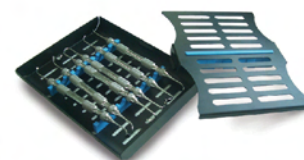
Simple KIT

Specialized surgical tools with simplicity and reasonable price for SM-S implant system.



ProTem KIT

Specialized surgical tools for Protem implant system



Sinus KIT

Specialized surgical instruments for sinus surgery  
Customized instruments with optimal convenience in usage



Bone Expander

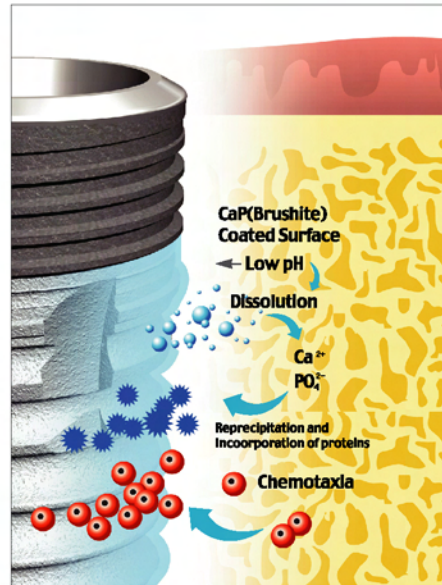
Surgical instruments to access implant osteotomy site without bone loss

Surface Treatment

RBM+Brushite(CaP)

Dual Surface Treatment

RBM surface treatment is selected for the Implant surface with roughness of Ra 1.2 ~1.5 and results in faster and superb osseointegration. Brushite, resorbable bioactive Calcium Phosphate, is coated on the RBM treated surface. Brushite coating electrochemically deposits bioactive brushite(CaP) as a thin layer ( $15 \pm 5\mu\text{m}$ ) into implant surface as a form of liquid including calcium and phosphate ion, resulting in shortened osseointegration period (6 to 12 weeks).

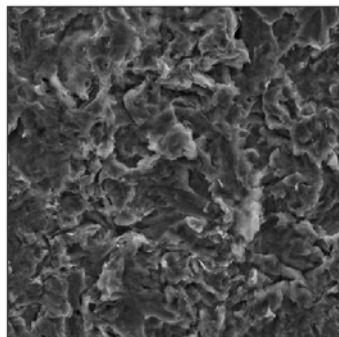


RBM(Resorbable Blast Media)

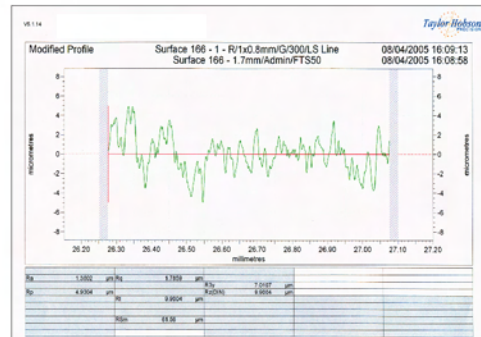
RBM (Resorbable Blast Media) surface treatment is a blasting process using absorbable particles that mainly consist of Hydroxyapatite (Beta-Tricalcium Phosphate, Alpha-Tcp, TTcp, Calcium Pyrophosphate(CPP). It provides even roughness without leaving embedded debris and acid residue on the implant surface.

Its successful clinical results were proven through a number of clinical cases.

DIO Smile Implant System applies this RBM surface treatment to the implant surface that ensures even surface roughness of Ra 1.2 ~ 1.5 through an automated system.



SEM



Roughness (Ra:1.2~1.5)

**Technical Information** The Implant fit for the body, is the pride of DIO Implant. We work hard to develop new products endlessly and to produce customer centric products through improvement.

### 1. Safety approval

Through various Biocompatibility tests, the body-match and safety have been approved.

#### Pyrogen Test (DaeHan Medical Association)

As a result of placing Pyrogen Test on the Implant, the pyrogen substances are negative, proving that it is not harmful to the body.

#### Sterility Test(USP 24<71>)

With microorganism growth interception and activation test, and with Sterility Test, no bacterial development has been observed, proving that there is no harm to the human body.

#### Acute Systemic Toxicity Test (ISO 10993-11)

As a result of the Acute Systemic Toxicity Test of Implant elution, no disorder or death has occurred during the observed period, proving that there is no harm to the body.

#### Cytotoxicity Test (ISO 10993-5)

In cell's technical, numerical evaluation of Implant elution, the form, stoma, separation, or cell dissolution was not observed, proving that there is no harm to the body.

#### Sensitization test (ISO 10993-10)

On the contact sensitization evaluation test, no erythema or oedema has been observed, proving there is no harm of allergy or sensitization reaction.

#### Intracutaneous Reactivity Test (ISO 10993-10)

On the test evaluating the structure of the affected part, no erythema, crust or oedema was observed proving that there is no harm to the body.

#### Implantation test (ISO 10993-6)

When implanted to an animal, on the structural evaluation, no inflammation or reaction was shown. Structure and osseointegration were also outstanding.

### 2. International product approval

By achieving US FDA certification(K061797, K070568), Europe CE Certification (CE0123), and ISO 13485, DSI has internationally proven its outstanding products and quality.



### 3. Fatigue Test(ISO14801)

SI type: 920N  
 SE type: 300N  
 SM-S type: 810N  
 SM-I type: 830N  
 SM-E type: 440N

**Dental Equipment**

By distributing High technology dental equipment, we provide a perfect product system for implant surgery. To realize the best implant environment, we provide only the world's best equipment chosen with strict standards, and we don't stop at sales, but provide continuous customer management and perfect warranty.



**Implant Surgical Motor**



**DIO Anthogyr**

- Large Tactile Screen
- Torque displayed in actual value
- Calibration Module Included
- 3 Protocol (4 Steps) memory
- Easy control with foot pedal

Manufacturer: Anthogyr (France)

**Implant Surgical Motor**



**ATR 3000+**

- Stable and consistent torque with ""Feedback Closed Loop""
- Alarm beeps when excessive load reached
- Auto calibration system with one button
- Compact Design

Manufacturer: ATR (Italy)

**Measuring Device**

**Periotest M**

- Wireless
- Easy operation with one-touch method
- Assessment of osseointegration of dental implants
- Diagnosis and assessment of periodontopathies
- Assessment of occlusal load

Manufacturer: Medzintechnik Gulden (Germany)



LED Phototherapy

**OsseoPulse**

- Near Infrared (NIR) Phototherapy
- Wound healing device
- Irradiate target tissues to accelerate healing
- Non destructive and non-thermal
- Mitochondrial cytochrome c oxidase in a cell absorbs photons and produces ATPs(adenosine triphosphate) that expedite wound healing

Manufacturer: BIOLUX (Canada)



Dental Unit Chair

**Kaiser, Kaiser W, 2080**

- Tactile LCD control panel
- Slimly Designed Film Viewer
- Advanced color display
- Double-articulating headrest; limitless positioning for improved treatment access
- Ergonomically and slimly designed chair backrest
- Removable glass spittoon with superior protection against chipping and staining

Manufacturer: Skydental (Korea)



Intraoral Camera

**MD100**

- Image Freezer/Clear with simple button
- Control function of Hue, Bright, Saturation and Contrast
- Auto focus, Anti fog (Ultra white LED), Auto on/off
- Applicable in multiple chair units due to its portability
- Simultaneously stores and displays images
- Automatic link with various multimedia (DVD, VTR, and Broadcasting)

Manufacturer: Allmax (Korea)



Ultrasound Based Surgery Machine

**Surgysonic**

- High precision and high frequency
  - Constant control of the depth and length of incision
  - Micrometric and selective incisions
  - Minimum amount of heat transferred
  - Maximum visibility during operation
  - Application
- Maxillo-facial surgery, sinus surgery, ridge split, bone grafting, scaling, periodontic treatment, etc,



**Portable X-ray**

**DX 3000(portable X-ray)**

- Slim size , ultra light '1.4kg'
- Handles for both hands enabling stable shooting.
- LCD monitor with user's view considered
- 60Kv with minimum emission of 1Ma
- Optimum compatibility with Schick sensor

Manufacturer : DEXCO(Korea)



**Intra Oral Sensor**

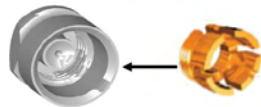


**Schick CDR Sensor**

- CMOS type
- Use in multiple chairs with one sensor
- Very small module
- Real time image viewing
- Multi-function X-ray program support
- Optimum compatibility with DX3000
- Saves X-ray film and photo development costs

Manufacturer : Schick(USA)

**Denture Attachment**



**Dalbo Plus**

- Complementary to conventional ball abutment
- Dual structure with titanium housing and jewelry material insert.
- Minimum wear on ball abutment and insert even with more than 10,000 uses.
- Easy and convenient sustainability adjustment
- 3 different sizes available for each ball abutment size.
- About 20° of insertion angle allowed.

Manufacturer : CM SA (Swiss)

**Denture Attachment**



**Locator**

- Path way adjustable up to 40°
- Shortest vertical height in the business (3.17mm)
- Easy and precious installation on denture
- Good sustainability of male with many different types available.

Manufacturer : Zest Anchor (USA)

**Denture Attachment**



**Magfit**

- Permanent sustainability
- Easy attachment and detachment by magnetic self-healing
- Stress breaking effect
- Easy manufacturing
- Easy patient hygiene control

Manufacturer : Aichi Steel (Japan)

**Medical Business** DIO toothpaste contains hydroxyapatite which constitutes 97% of teeth and 60% of bones. FDA approved, it is the best premium toothpaste with its quality excellence praised worldwide. DIO Paste Series contains Crystalline HAp which has a very high degree of purity among hydroxyapatite, therefore being very effective in preventing dental and periodontal trouble.

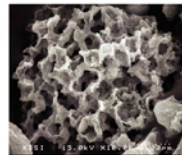


| 3,57 Oz (100g) | 0,70 Oz (20g)

### DIO HAp Toothpaste / PREMIUM

DIO toothpaste is the best premium toothpaste using expensive Crystalline HAp which has a very high degree of purity, not the chemically combined cheap HAp available in the market

- Treatment and prevention of sensitive teeth
- Whitening teeth and maintaining white teeth.
- Treatment and prevention of tooth decay



Hydroxyapatite

Major ingredient in human bones (HAp 60%) and tooth enamel layer (HAp 97%).

It is a bioactive ingredient making teeth smooth and shiny by filling minute scars on tooth surface.



| 1,76 Oz (50g) | Refill: 10,56 Oz (300g)

### DIO Nano-HAp Toothfoam

Using Nano size HAp, it is a foam type toothpaste enabling easy tooth brushing with or without a toothbrush when outdoors.

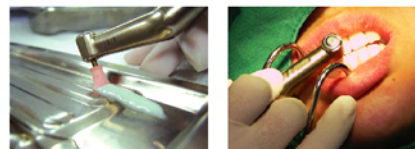
- Sensitive teeth soothing
- Use after implant surgery
- Use during orthodontics
- Use after teeth-whitening treatment



| 1,76 Oz (50g)

### DIO PRTC / Dentist

DIO PRTC (Professional Re-Enameling Tooth Cleaning) final stage paste is optimum for instant effect on the damaged tooth surface after dental treatment



- Hypersensitivity treatment
- Re-coloring prevention
- White spot elimination
- Roughened tooth surface recovery
- Remineralization

Wring out PRTC into a tray, smear it with a rubber cap, and treat teeth by rotating it into the entire tooth surface. After treatment, remove the paste with a 3 way syringe so that no paste would remain on the gum.



## DIO Dental Clinic Opening

Total Solution : Total Services for Dental Clinic Opening

DIO Implant provides total services for dental clinic opening.  
Benefits from DIO Opening Program

- Possibility of purchasing equipment, implants, interior construction by leasing
- Feasibility to fund the initial capital to start
- Best services by reliable corporate
- One-stop service



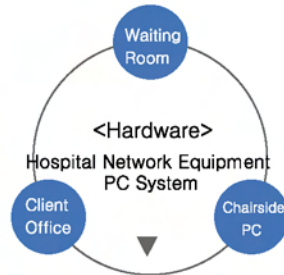
### Dental Clinic Opening Program

Location Selection	Selection of ideal location through analysis of professionals
▼	
Loan	Maximum amount of loan while seeking for minimum interest.
▼	
Interior	Setting up customers' living space based on construction know-how with 20 years of experience, and warranty. (Providing distinguished and high standard interior designs with a background of 20 year experience in construction business)
▼	
Equipments and Materials	World best products at reasonable prices (Various selection of products and guaranteed quality)
▼	
Clinic Image Constructing	Providing the image of clinic, marks, logos, signs.
▼	
Management	Management Manual, Financial Planning, Administrative Services
▼	
STAFF Education	Staff education regarding administrative tasks, hospital management, moment of trust, patient consultation skills, customer relationship management
▼	
Post Service	Equipment repairs, Parts warranty, Maintenance of Interior
	<p><b>Clinic marketing</b> Through general marketing, effective advertisement with low expense. (Providing inside and outside consulting and effective marketing)</p>

IT Solution

Digital Network System

We organize internal PC system of the clinic, enabling digital networking systems for offices, waiting rooms, and chairs.

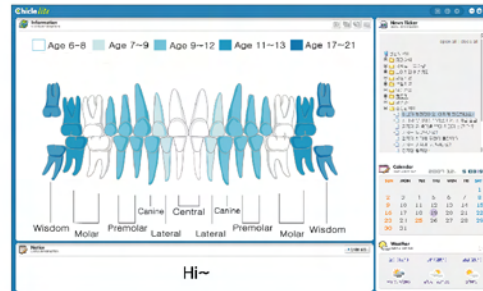


- Providing Various Contents
- Explanatory video clips for patients
  - Consultation video clips for patients
  - IT Program – Real time news  
Photo gallery  
Animated medical consultation  
Promotional video clips of the clinic

CT, Panorama, Portable x-ray, Oral Camera

DIO MS(Management Service) Solution

DIO IT Solution System provides dental related contents by using digital equipment such as PC, PDP, and etc. It is a tool for patients to get information in every field of dental related topics. By providing information to patients in waiting room, surgery room, and consultation room, it will enhance credibility of the clinic and also differentiate from other clinics.



- Patient consultation program
- Hospital Management System
- Marketing
  - ▶ Up-to-date news
- Contents
  - Angel board → Image gallery
  - Music broadcast → Video clips of medical consultation
  - Long distance clinic monitoring service
  - Online product order

Promotional video clips for clinic

- Introduction of internal clinic structures and equipment
- Introduction of treatment areas
- Introduction of dentist and staff
- Special treatment introduction

# Academic Association

1. Academic & Research Association
2. DIA(DIO Implant Academy)

Academic & Research Association



**Introduction of various clinical information through seminars**

Contribution to popularization of implant surgery by providing educational lectures on basic and advanced implantology with case-based curriculum

**Publishing clinical case reports**

Contribution to the development of clinical studies by publishing clinical case reports in various languages

**Supporting academic researches**

Members of DIA academic association participate in a number of studies in implantology to discuss and lecture the surgical practices and tips.

**Providing tips on how to use the implant surgery related equipment and material**

Collect and analyse the clinical data of implant surgery related equipment and material and providing tips on how to use them correctly.

**Seminars and symposiums in many countries**

Putting the efforts on expansion of implant surgery through the seminars in USA, Australia, and China. Informing the benefits of implant surgery through the seminars in Dubai, South America, Vietnam, and Thailand.

**Consultations with patients**

Most patients perceive implant surgery as expensive and scary surgery, therefore DIA association inform the benefits of implant surgery to patients through on and off lines.



**Lee, Oak**

Private Practice at Samsung Dentistry-Gangnam  
Part-time clinical Instructor at Harvard University (School of Prosthodontics)  
Chief of Prosthodontics Dental Dept. at Samsung Hospital-Seoul  
Course completion at USC dentistry of prosthodontics.



**Kim, Jong Jin**

President of BAO  
BAO Course Director  
Graduated from Seoul National University  
Member of Academy of Osseointegration  
Member of American Association of Prosthodontics  
Adjunct Professor at Boston University of Implantology  
Chairman of Prosthodontics Dental Dept. at Seoul Asan Hospital



**Lee, Dal Ho**

Vice President of BAO  
Graduated from Dankuk University (School of Dentistry)  
Course completion at Boston University in Prosthodontics  
Full-time professor at Boston University in Prosthodontics  
Member of Academy of Osseointegration  
Member of American Association of Prosthodontics  
Private Practice at Bangbae Boston Dental Clinic in Seoul  
American Academy of Periodontology, Active Member



**Um, Seung Il**

Graduated from Busan National University  
Course completion at New York University in Implantology  
Fellowship program completion at NYU in Implantology  
Master degree from New York University (School of Dental Material)  
Private Practice at World Dental Clinic-Busan



**Park, Sang Hoon**

International Director of BAO  
Graduated from Yonsei University (School of dentistry)  
Post Doctoral Program in Prosthodontics at BU  
Yonsei University Dental School  
Graduated from Yonsei University Dental School, DDS  
Boston University Dental School,  
Post doctoral program in Prosthodontics CAGS  
Program director in Prosthodontics at Team Dental Hospital  
Private Practice at Boston Dental Hospital,  
PyongTaek, Korea. Prosthodontics.



**Yoon, Sung Wook**

Clinical Instructor (Part-Time)  
at Harvard University in Prosthodontics  
Course completion and Masters degree  
from University of Columbia  
Course completion and Masters degree  
from Catholic University (Medical)  
Private Practice at Columbia dental clinic- Seoul



**Kim, Jong Jin**

Clinical Instructor (Part-Time)  
at Harvard University in Prosthodontics  
Ph.D degree from Seoul National University-School  
of Dentistry  
U.S Trained and Licensed Dentist  
Prosthodontist, Esthetic and Restorative Specialist  
Columbia Univ. School of Dental and Oral Surgery,  
(Clinical Instructor)



**Gil, Joon Gyu**

Vice President of Implant Association  
General Director of Korean dental technique Association  
President of Korean Academy of dental technology  
SCRIP Implant Prosthetic instructor  
Course completion at Kuwata College-Japan  
President of Kikong Maeul Dental Laboratory



**Dr. Mahmood Qureshi**

President, Pakistan Academy of Implant Dentistry (PAID)  
Director, the Clinical Research & Development Institute  
Director, Implant & Reconstructive Dentistry Continuing  
Education 'ARTIS' implant system  
(The International Institute of Replacement Therapy)  
Montmorency College of Dentistry, Lahore/Pakistan  
Postgraduate training in Oral Implantology  
from U.K.,U.S.A. & Switzerland



**Dr. Leon Chen, DMD, MS, DICOI**

Founder of the DII (Dental Implant Institute)  
Graduated from Harvard University  
(School of Dental Medicine)  
Masters of Science in Periodontology  
from Northwestern Univ.  
Instructor for the Implant Department at Harvard  
Member of the UNLV President's Foundation  
Fellow and Diplomate of the international Congress  
of Oral Implantologists



**Louie Al-Faraje, MD, DDS**

Received M.D. STOM Degree from Kiev Medical Institute,  
Faculty of Stomatology Kiev, Ukraine.  
Post-doctorial at Loma Linda University  
Fellow of the International Congress of Oral Implantologists.  
Fellow of the American Academy of Implant Dentistry  
Member of the American Society of Osseointegration  
Diplomat of the American Board of Oral Implantology  
Founder of the California Implant Institute (CII)



**Lee, Hyo Jung**

Program director at BAO  
Graduated from Seoul National University  
(School of Dentistry)  
Boston University Dental School ,  
Post doctoral program in periodontic  
Masters Degree from University of Boston,  
School of Dentistry  
Acquired License of American Periodontology  
Diplomate of American Academy of Periodontology  
Periodontist at Seoul National University Hospital  
of Bundang



**Sergio Alberto Vilchis Ortega**

Graduated from Unitec University in Pedodontics)  
Graduated from Ula in Orthodontics)  
Graduated from Loma Linda University in Implantology  
Implantis Innovation Microlock  
Founder of CIORe  
Member of Academy of Osseointegration

- CONTINUE -

DIA(DIO Implant Academy)

Clinical Education of Specialized and systematic Implant

Specialized and Systematic Implant Clinical Education.

DIO Implant runs the specialized and systemic seminar education program with prominent speakers and improved education program to everyone from beginners of Implant to familiar ones, and supports implant specialist training and dental implant studies.

Seminar (DIO Institute Academy)

Basic course	Advanced course	Master course
Diagnosis and treatment planning Surgical kit analysis Implant placement Soft tissue managements G.B.R	Sinus graft Bone graft Ridge split Flapless surgery Overdenture	Dental Clinic Managemnt Staff Management G.B.R Live surgery Hands-on Implant Placement
In the Basic course, we give confidence to the directors who want to have systematic Implant education with various practices and prosthesis placing.	For the directors with experience of Implant, we not only give speeches on various method on surgery or prosthesis, but give opportunities to solve difficult cases through practice.	Each seminar has its own titles and special sessions about dental management, dental staff, G.B.R. Live surgery, and Hands-on Implant Placement.

- **Overseas Course, and Domestic seminars for the overseas Dentists**
  - Building dentist infrastructure through training institute and thus, make new customers.
  - Direct-indirect advertisement through training institute resulting in easy marketing access for overseas markets.
  - Beginning with Korean dentists in east and west coast, expand to the entire USA and the rest of the world.
- **Advance Course perfect in practice and real surgery**
  - Focused practice course completing 1~2 Topics each day
  - Systematic education on new equipment helpful for successful treatment
  - Saving time and costs
- **Systematic and scientific approach (clinical cases and easy explanation)**
  - Showing strong points for many kinds of implants, building scientific data base, explaining implant structure, and making surgical & prosthetic protocol into Power point and pamphlets.
  - Making Protocols on detailed surgery method and usage of each tool on each case.
  - Protocol on correct usage of surgery equipment and tools.
  - As a result, producing Text books (Korean and English)
- **Live Surgery on actual patient**
  - Training director places implants on the actual patient
  - Course Director and Faculty's teaching and Supervising
  - Two Live Surgery broadcasts
  - Technical Support from surgery to placing prosthesis.
- **Systematic and Tested Program**
  - Based on practice, consists of clinically applicable topics.
  - Upgraded Curriculums tested during past 5 years in real practice.
  - Master of current top implant systems. (Astra, ITI, Brenemark)
- **Basic over basic**
  - Treatment area expanded by G.B.R addition.
  - CT analysis method and 3D RP model usage (Less traumatic surgery like flapless surgery possible)
  - The clinic management Topics (tax, accouting, money investment) for successful opening and management of the dental clinic.
- **Implant education for dental staff**
  - Separate staff education on implant during the training period to facilitate co-work between doctors and staff during surgery.

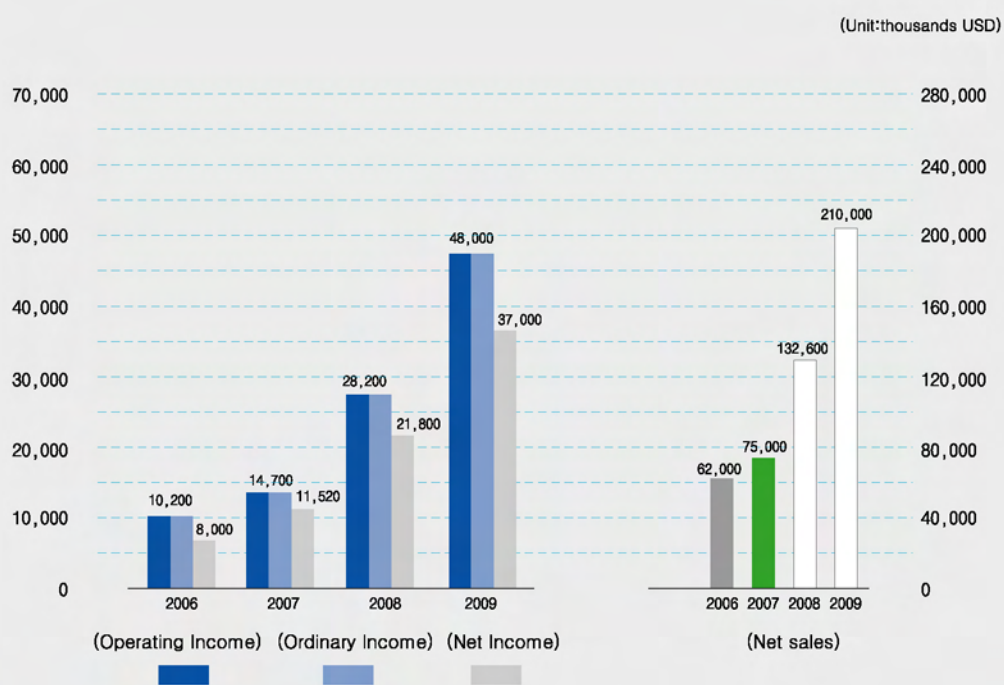
# Corporate

1. Outline and Accomplishments
2. Research & Development
3. Business at a Glance
4. Global Business Network

## Corporate Profiles

Corporate name	DIO
Establishment	January 23 1983
Chairman of the board	Kim Jin Cheol
President and Chief Executive officer	Kim Jin Baek
Head office(Factory)	1464 Woodong, Haeundae-ku, Pusan City, Korea
Seoul branch	Room 1004, Ssangnim B/D. 151-11 Ssangnim-dong, Jung-gu, Seoul, 100-400, Korea
Capital	5.7 million dollars (Fiscal year 2007)
Net sales	75 million dollars (Fiscal year 2007)
Number of employees	370 employees 170 employees in Headquarter office 200 salesmen
Affiliated Coporates	Kilmin Construction: 503-7 Jangjeon-dong, Keumjung-ku, Pusan City, Korea Dongseo Hightech : 1212-2 Joil-li, Samdong-myun, Ulju-goon, Ulsan City, Korea

## Financial Performance(Consolidated)





**Research & Development** DIO Implant is actively increasing R&D investment and is developing world class technology.

**DIO R&D center**

R&D on dental implants and instruments

Unilateral development of SM(SMILE MASTER) implant series

Protem Implant system is newly developed (Protem is usually used for narrow osteotomy site and temporary prosthesis sustain (Diameter 2.0/2.5/3.0mm)

BioTite-H : The coating that electrochemically deposits bioactive brushite(CaP) as a thin layer (15 ± 5µm) into implant surface in liquid including calcium and phosphate ion, resulting in shortened osseointegration period (6 to 12 weeks).

**Busan National University IGB center**

R&D on HAp, DIO toothpaste, and HAp bone marrow cloning

DIO toothpaste includes more than 98% purity HAp (hydroxyapatite) that is extracted from natural material and has FDA as well as KFDA approval as a drug, not a cosmetic.

Foam toothpaste using NANO-HAp, an ultra-minute particle, enjoys a good reputation both in domestic and overseas markets.

**Germany R&D center**

R&D on the 3rd generation EPC stents and surgery instruments.

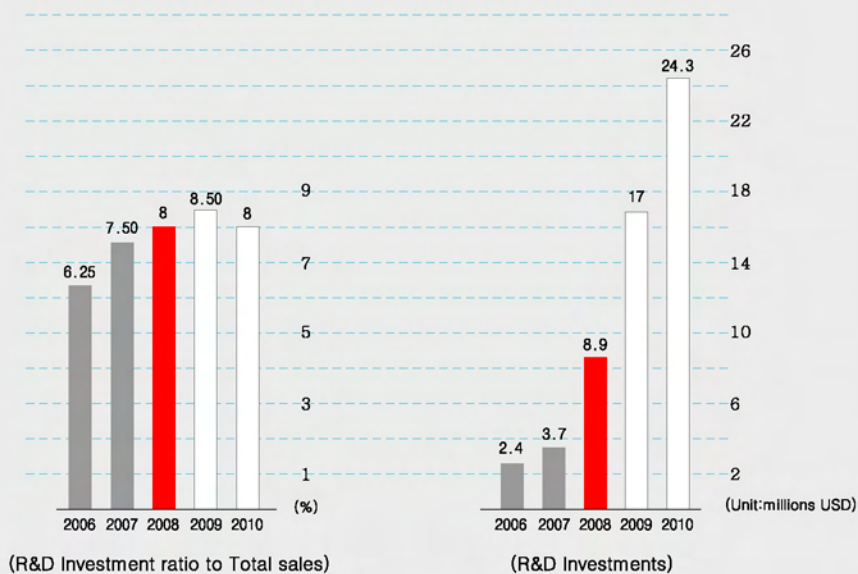
The innovative technology that facilitates regeneration of endothelial layer and prevents thrombosis and restenosis, thus being safer and more effective compared to 2nd Generation Drug Eluting Stent (DES). DSI is developing this new generation stent with technology alliance with the Fraunhofer Research Institute in Germany, and applied for Korean, German, and PCT patent.

**Government Support Project**

**Bio Active Implant**

The surface treatment that bioactive material(Mg) is injected into implant surface without a coated layer, thus expediting and maximizing osseointegration.

It is now under animal experiments.



## Business at a Glance

DIO Co. Ltd. holds a long history over 20 years and with its technology, it is becoming the top ranked company.

With the high quality production technology and endless R&D, it has been approved by the international certification authorities, and will go global as a company always thinking on the customers' side.

### 2007

02 KGMP certified  
04 Established Peking DSI Technology Limited Corporation

### 2006

03 USA FDA certified  
05 Established DIO Australian Limited Company  
09 Established DIO Thailand Co., Ltd  
11 Entered agreement with German Biosteel Medical company for joint medical equipment development (Stent)  
12 Selected into the Ministry of Commerce, Industry and Energy project for popularized implant development

### 2005

04 ISO 13485 certified  
06 Europe CE certified  
08 Established Vietnam branch office

## Remarkable

### 2001~2003

02 Nominated as a producer of world-class products (Ministry of Commerce, Industry & Energy: MOCIE)  
03 International Forum Design Award in Hanover Germany  
Awarded the order of merit by the President of Korea for the development of superior capital goods.

### 1990~2000

95 Obtained Europe CE mark  
Obtained German GS mark  
97 ISO 9001 certified  
98 Obtained EM mark  
99 Attained \$5million on Export  
00 Name change from Dongseo Machinery Co., Ltd to D S I Co., Ltd  
Established China Shanghai branch  
Registered in KOSDAQ stock exchange market  
Awarded the grand prize for Korean packing M/C (Association of Korean Packing Machinery)  
Received 5 million dollar export trophy and Honorable Medal from the Prime Minister


### 1983 ~1990

83 Establishment  
88 Established Dongseo Machinery Co.Ltd.  
89 Began exports of automatic packing machines  
90 Designated as Prospective Small to Medium Company (Industrial Bank of Korea)

### Global Business Network

Exports over 50 countries (140 persons)

Wider, Faster, and Higher, DIO, is aiming for and accomplishing its goal to step up into the wider world. In times of rapid urbanization and as the continental differences are overcome, DIO increases its phase and to have a chance to achieve its vision, DIO will become Global Leader with product quality and service.

 Branch (6) Distributor (44)



### Domestic Sales Network

● Sales office : 16 major cities (200 persons)



### Overseas Branches

- **DIO U.S.A**  
3540 Wilshire Blvd #1104, Los Angeles, CA 90010  
Tel. +1 213 365 2875, Fax. +1 213 365 1595
- **DIO China**  
BEIJING SHI CHAOYANGQU WANGJING NANHUXIYUAN YINLING GUOJI 130 LOU 904 HAO  
Tel. +86 10 8687 3787, Fax. +86 10 8472 7846
- **DIO Australia**  
Suite 94, 809-811, Pacific Highway Chatswood, NSW, Sydney, Australia, 2067  
Tel. +61 2 9419 4109, Fax. +61 2 9419 6588
- **DIO Mexico**  
Eje Central 805 Col. Portales C.P.03300 Mexico, D.F.  
Tel. +52 1 55 1843 0690, Fax. +52 55 5539 2729
- **DIO Thailand**  
#5k Rimco bldg. 139 Soi Sukhumvit 63, Klongtan Nua, Wattana, Bangkok 10110  
Tel. +66 2 714 7875, Fax. +66 2 714 7744
- **DIO Vietnam**  
243-243B Hoang Van Thu St., Tan Binh District, Ho Chi Minh City, SR Vietnam No.111  
Tel. +84 8 997 4878, Fax. +84 8 997 4895

[www.dio.co.kr](http://www.dio.co.kr)

**DIO**

**Head quarter(Factory)**

1464 Woodong, Haeundae-ku, Pusan City, Korea  
Tel.+82-55-380-7900 Fax.+82-55-383-7904

**Seoul office**

Room 1004, Ssangnim B/D. 151-11 Ssangnim-dong,  
Jung-gu, Seoul, 100-400, Korea  
Tel.+82-2-2268-2850 Fax.+82-2-2275-2850



**Overseas Branches**

---

**DIO U.S.A**

3540 Wilshire Blvd #1104,  
Los Angeles, CA 90010  
Tel. +1 213 365 2875, Fax.+1 213 365 1595

**DIO Australia**

Suite 94, 809-811, Pacific Highway Chatswood,  
NSW, Sydney, Australia, 2067  
Tel. +61 2 9419 4109, Fax.+61 2 9419 6588

**DIO Thailand**

#5k Rimco bldg. 139 Soi Sukhumvit 63, Klongtan Nua,  
Wattana, Bangkok 10110  
Tel. +66 2 714 7875, Fax. +66 2 714 7744

**DIO China**

Beijing Shi Chaoyangqu Wangjing Nanhuxiyuan  
Yinling Guoji 130 Lou 904 Hao  
Tel. +86 10 8687 3787, Fax. +86 10 8472 7846

**DIO Mexico**

Eje Central 805 Col. Portales  
C.P.03300 Mexico, D.F.  
Tel. +52 1 55 1843 0690, Fax. +52 55 5539 2729

**DIO Vietnam**

243-243B Hoang Van Thu St., Tan Binh District,  
Ho Chi Minh City, SR Vietnam No.111  
Tel. +84 8 997 4878, Fax. +84 8 997 4895